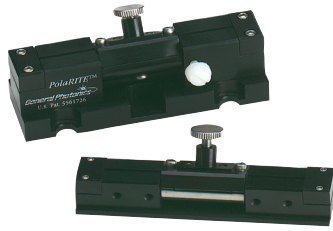


Drop-in Polarization Controller - PolaRITE™ (PLC-003/006)



This is the in-line version of the PolaRITE™ polarization controller. It can be inserted into a fiber optic system to control the polarization state of light without having to disconnect any part of the system. It can be used by simply inserting a length of fiber into the slot located on top of the device. The miniature version can be inserted in even tighter spaces in a fiber optic module.

Specifications:

Intrinsic Insertion Loss	< 0.05 dB
Return Loss	> 65 dB
Operating Wavelength	480 nm, 633 nm, 780 nm, 820 nm, 980 nm, 1064 nm, 1260 to 1650 nm
Extinction Ratio	> 40 dB
Operating Temperature	-40 to 85 °C
Storage Temperature	-40 to 85 °C
Dimensions	PLC - 003: 3.00" (L) x 1.00" (W) x 1.09" (H) PLC - 006: 3.00" (L) x 0.63" (W) x 0.67" (H)

Features:

- Low Loss
- Low back reflection
- Compact
- Easy to connect
- Low cost
- Insensitive to wavelength variations
- Works with fibers of any size

Applications:

- High speed telecommunication systems
- WDM systems
- CATV systems
- Fiber laser
- Fiber sensor systems
- PM fiber systems
- Antenna remoting systems

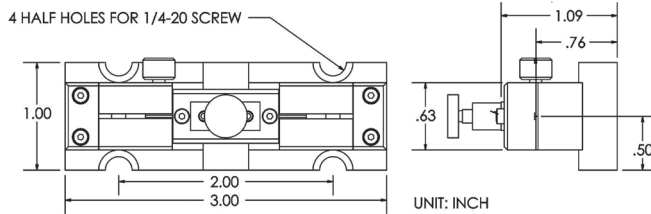
Related Products:

- Polarization Controllers (PLC-002/M02, PLC-004/005)
- Components

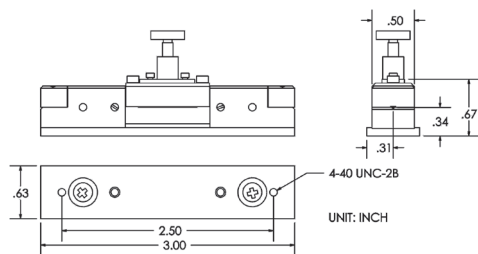
Tech Info:

- What is Polarization?
- Polarization in Fiber Systems: Squeezing out More Bandwidth
- PolaRITE™ Polarization Controllers Application Note

Dimensions (in inches):

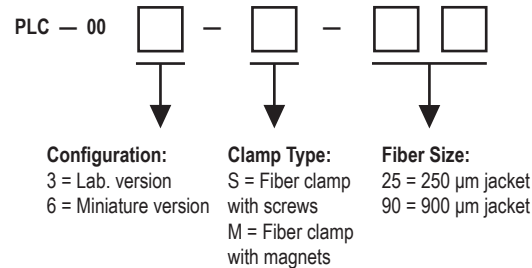


PLC-003



PLC-006

Ordering Information:



Notes:
 PLC-006 has no 900 μm jacket option
 Magnet clamp available only for PLC-003 for 250μm fiber
 900μm fiber version should be used with tight-buffered fiber.