

RZG-X110

11 Gbps RZ Data Pattern Generator



Overview

The OPTELLENT RZG-X110 is a cost-effective easy-to-use 11Gbps RZ (Return-to-zero) data pattern generator (PPG) for testing components such as lasers in R&D and manufacturing environments. The RZG-X110 generates multiple PRBS patterns, popular stress patterns, and user-defined patterns using an internal clock source. An optional input for an external reference clock source is also available. The RZG-X110 features output amplitude control and comes with a standard 2-year warranty.

An intuitive Graphical User Interface enables easy point-and-click operation. The Optellent RZG-X110 software runs on Windows 98/2000/NT/XP and VISTA over USB or RS-232 serial interface via an RJ-45 Connector provided on the front panel.

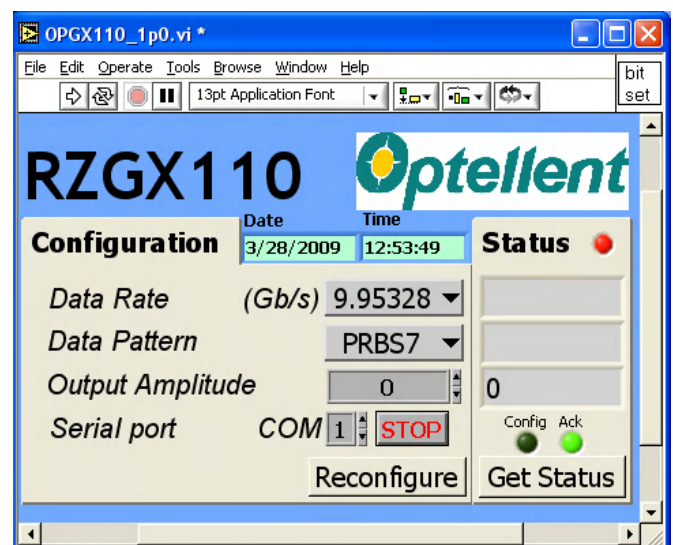
Applications

- ▶ Testing of optical transceivers, transponders, and linecards
- ▶ Testing of opto-electronic components and devices (TOSA, lasers, etc...)
- ▶ Fibre optic link testing

Key Features

- ▶ Differential Data Outputs
- ▶ Multiple PRBS Patterns: 2^7-1 , $2^{23}-1$, $2^{31}-1$
- ▶ Stress Patterns: K28.5, CJPAT, CRPAT (optional)
- ▶ User-defined pattern (optional)
- ▶ External Clock Input (optional)
- ▶ Intuitive GUI

Software Interface



Specifications

Parameter	Min	Typ	Max	Units
Data Output				
Output Type	Differential			
Output Format	RZ (Return-to-Zero)			
Termination	AC-Coupled			
Data Patterns	<ul style="list-style-type: none"> • PRBS: 2⁷-1, 2²³-1, 2³¹-1; 101010...pattern • Pre-defined: K28.5, CJPAT, CRPAT (Optional) • User-defined: 128 bits to 50000 bits (Optional) 			
Output Amplitude (Single-ended)	150		600	mV
Data Rise/Fall Time, (20 – 80%) ⁽¹⁾		20		ps
Data Output RMS Jitter ⁽¹⁾		1.8		ps
Clock Output				
Termination	AC- Coupled			
Output Amplitude (single-ended)		200		mV _{p-p}
Reference Clock Input (Optional)				
Termination	Differential, AC-coupled			
Clock input amplitude (Single-ended)		300	500	mV
Frequency Range	620		715	MHz
Trigger Output				
Output Amplitude	300			mV _{p-p}
Output Type	Single-ended, AC-coupled			
Electrical connectors	50Ω SMA Female			

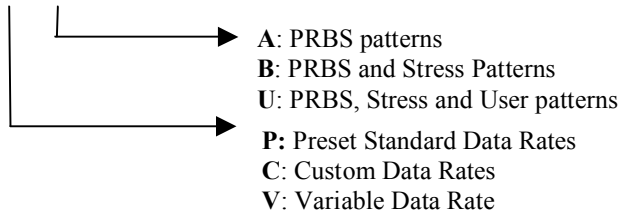
(1) Measurements based on PRBS2²³-1 data at 9.95328 Gbps (OC-192)

System & General Specifications

PARAMETER	MIN	MAX	UNIT
Chassis Electrical Voltage	100	240	VAC
Current Drain at Normal Voltage		2.5	A
Operating Temperature Range	5	45	°C
Storage Temperature Range	-40	70	°C
Dimensions (L x W x H)	300 x 240 x 64		mm ³
	12 x 9.5 x 2.5		inch ³
PC Interface	RS-232		
Standard Warranty	2 years		

Ordering Information

RZGX110-X-X



Accessories Included

- User Software
- User Manual
- Power cord
- PC Interface cable

Accessories & Services for RZGX110

Part Number	Description
OPZ1015	Serial-to-USB Converter
OPZ1201	Carrying Bracket
OPZ1202	Mounting Brackets
OPZ2015	Additional 1 year Warranty
OPZ3015	Calibration Service

Specifications are subject to change without notice. OptoBERT™ is a registered trademark of Optellent, Inc. © 2009 OPTELLENT Inc.