

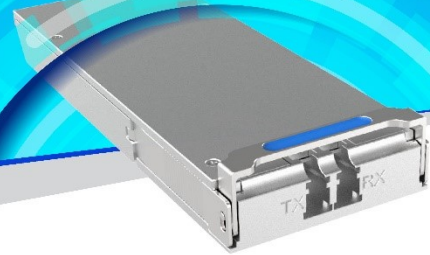
## PRODUCT DETAILS

Eoptolink's 100G 10km CFP2 Optical Transceiver



# EOLC-161HG-C-10-L1A

100G-LR4, OTU4 4I1-9D1F, CFP2  
With Duplex LC interface



## Product Description

Eoptolink's CFP2 transceiver module is designed for 100 Gigabit Ethernet & OTU4 links over 10Km single-mode fiber. The module has 4 independent electrical input/output channels, and the operating speed of each channel is up to 28Gbps. This transceiver consists of transmitter and receiver units and operates on a set of 4 wavelengths near 1310nm on the ITU G.694.1 LAN-WDM grid. The transmitter unit contains a Tx CDR, a 4-channel modulator driver and a 4-channel EML. On the receiver path, there are a 4-channel PIN arrays and a 4-channel TIA arrays, as well as Rx CDR.

## Features

- Up to 10km over SMF
- Duplex LC connector
- Supports 103Gbps and 112Gbps aggregate bit rates
- Single 3.3V power supply and power dissipation < 6W
- 4\*28Gbps DFB-based LAN-WDM transmitter
- PIN and TIA array on the receiver side
- Commercial case temperature range:  
0°C to 70°C
- Class 1 FDA and IEC60825-1 Laser Safety Compliant
- Safety Certification: TUV/UL/FDA<sup>\*1</sup>
- RoHS Compliant

## Applications

- 100GBASE-LR4 Ethernet
- OTU4 4I1-9D1F

## Ordering Information



Part No.	Data Rate <sup>*2</sup>	Fiber	Distance <sup>*3</sup>	Interface	Temp.	DDMI
EOLC-161HG-C-10-L1A	112Gbps	SMF	10km	LC	0~70°C	Yes

\*1: For the latest certification information, please check with Eoptolink.

\*2: Switching between 100GBASE-LR4 and OTU4 4I1-9D1F through MDIO.

\*3: 10 km with 9/125µm SMF.

\*The product image is only for reference purpose.

## Quality

Eoptolink Technology has passed many quality system verifications, established an internationally standardized quality assurance system and strictly implemented standardized management and control in the course of design, development, production, installation and service. For latest certification/accreditation numbers, please contact us.



## Notice

Eoptolink reserves the right to make changes or discontinue any optical link product or service identified in this publication, without notice, in order to improve design and/or performance. Applications that are described herein for any of the optical link products are for illustrative purposes only. Eoptolink makes no representation or warranty that such applications will be suitable for the specified use without further testing or modification.

## Eoptolink Technology Inc., Ltd.

Add: No.127 West Wulian Street, Shuangliu District, Chengdu City 610213, P.R.China.

Tel: +86-028-6708 7983 (HQ); +86-028-6708 7999

Fax: +86-028-6708 7979

Email: [sales@eoptolink.com](mailto:sales@eoptolink.com)

<http://www.eoptolink.com/>