

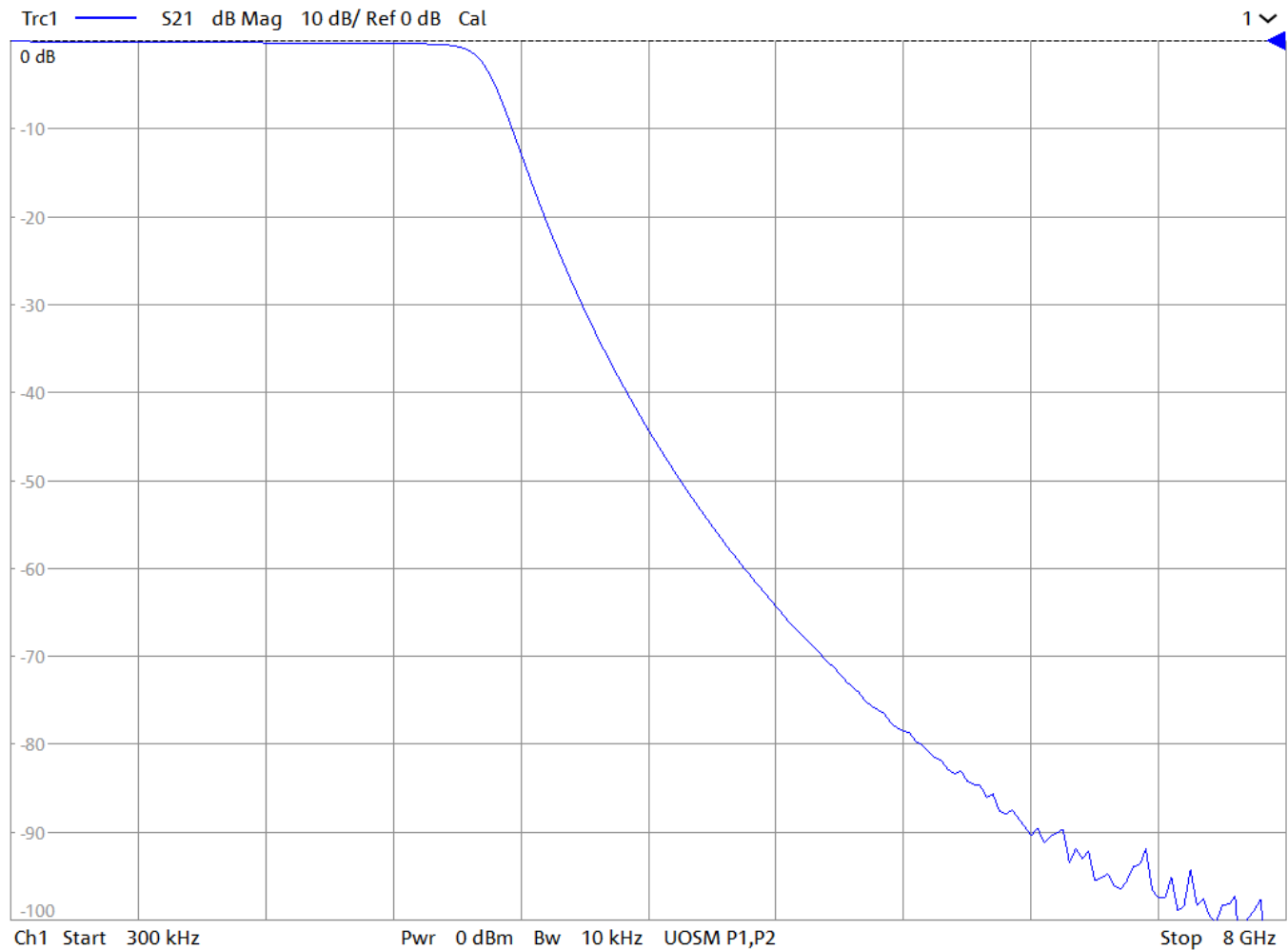
General Description

KR Electronics part number 3281-SMA is a 2750 MHz low-pass filter. The filter has a minimum 1 dB bandwidth of 2750 MHz. Other bandwidths available. Please consult the factory.

Features

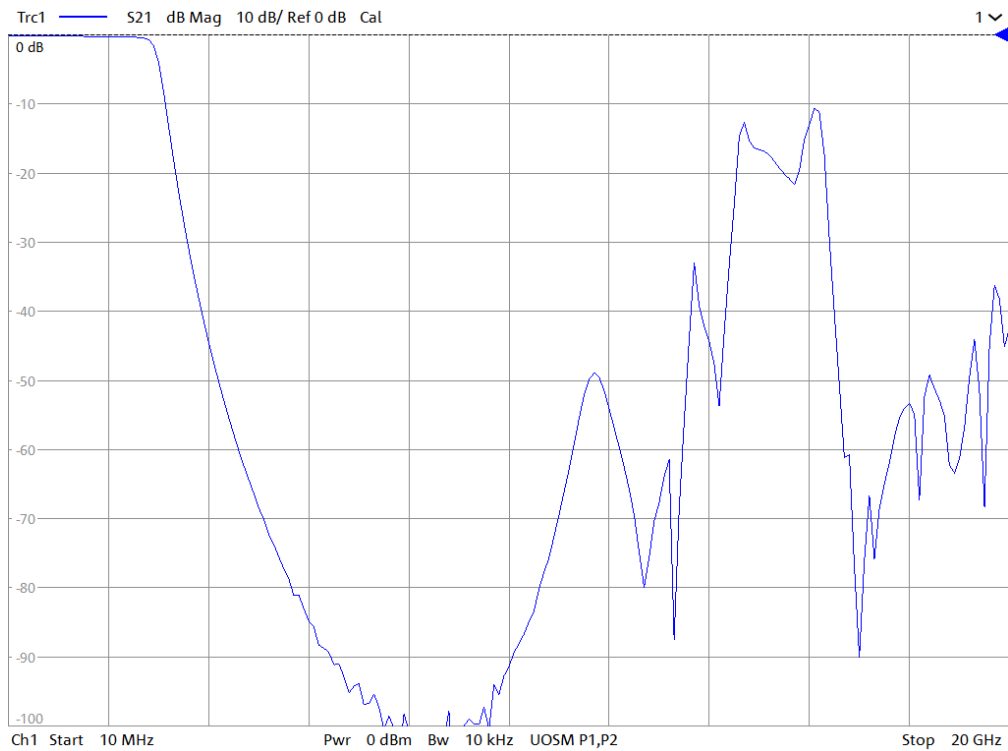
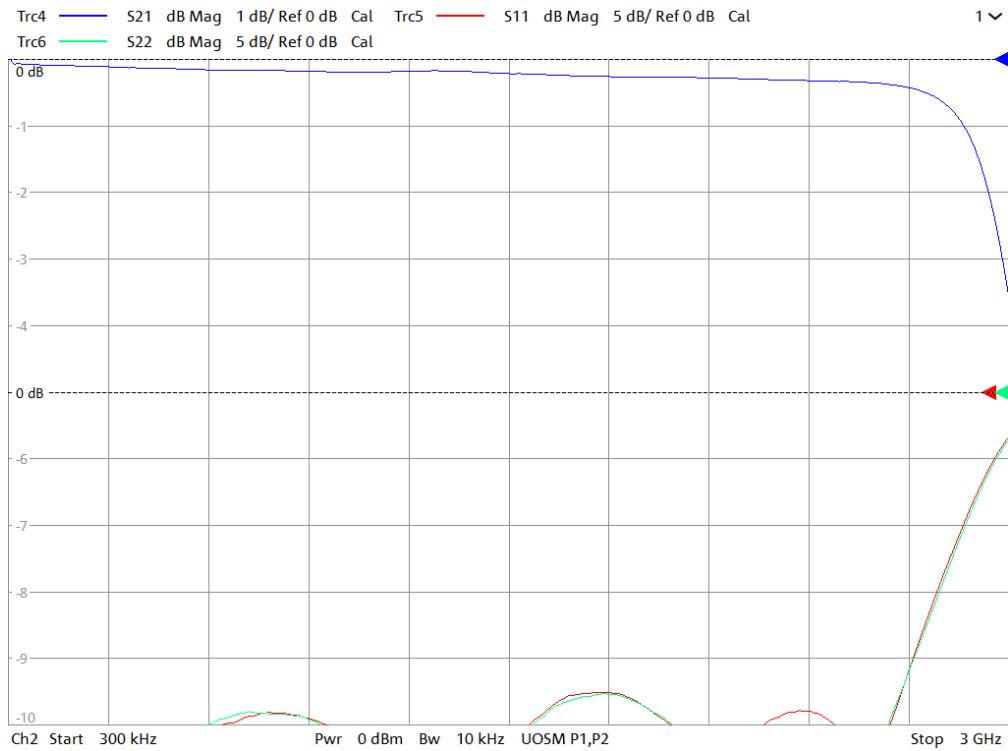
- 2750 MHz Lowpass
- 1 dB max at 2750 MHz
- 50 Ω Source and Load
- SMA Connectors
- Surface Mount Available

Typical Performance



KR Electronics, Inc.
91 Avenel Street
Avenel, NJ 07001

www.krfilters.com
sales@krfilters.com
(732) 636-1900

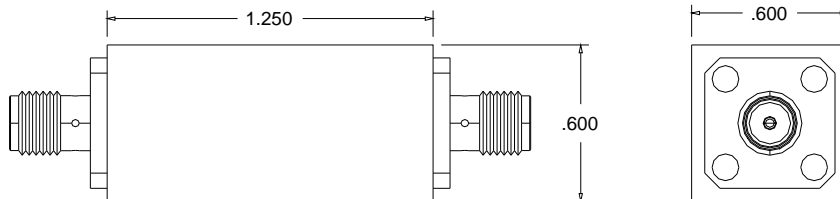
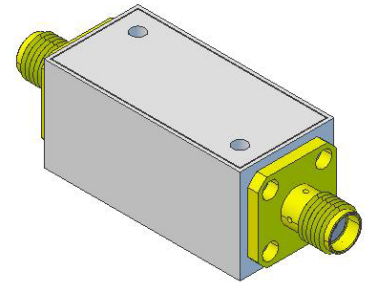
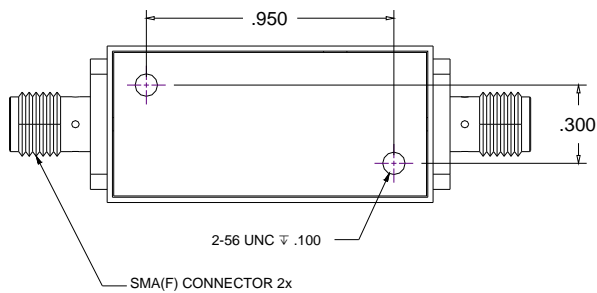


KR Electronics 3281-SMA

Specifications

Parameter	Specification	
Filter type	Lowpass	
End of Passband (1 dB max)	2750 MHz	0.5 dB typical
Rejection at 3900 MHz	40 dB typical	
Rejection to 9000 MHz	40 dB min	
Source and Load	50 Ω	

Physical Dimensions



Notes:

1. Dimensions in inches
2. Metal Case
3. SMA(F) Connectors
4. Also available in surface mount package