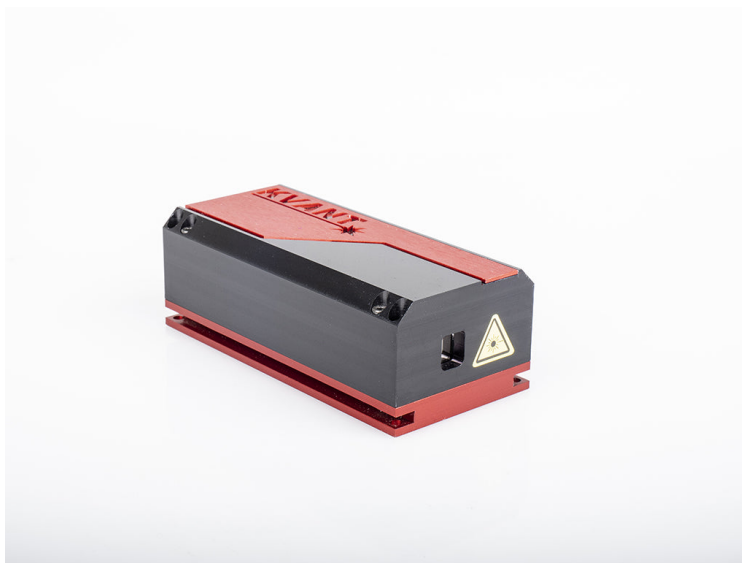


320LM-20

PRODUCT SPECIFICATION SHEET



SPECIFICATIONS

Optical power (mW):	> 20
Center wavelength (nm):	320
Center wavelength tolerance (nm):	± 1
Beam diameter (95% of power, mm):	1
Beam divergence (half angle, mrad):	~0.3
Linear polarization:	Yes
M² :	<4
Modulation freq.(kHz):	CW only
Peak power consumption:	24V/2.5A
Dimensions (LxWxH,mm):	125x60x44
Driver dimensions (LxWxH,mm):	117x89x34