

XX-12800G

PROVIDES THE DATA THAT COUNTS FOR NETWORK MONITORING

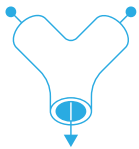
AGGREGATION, REPLICATION, ADVANCED FILTERING, LOAD BALANCING

The Profitap XX-12800G is a high-density Network Packet Broker, bringing you the power and flexibility of network traffic management with a total throughput of 12.8 Tbps in a single 19" rack unit.

With 32 QSFP-DD ports (40/100/400 Gbps), the XX-12800G allows for aggregation, replication, filtering and load balancing in very high bandwidth port monitoring and analysis scenarios.

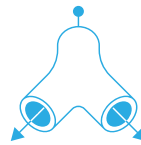


KEY FEATURES



AGGREGATION

Aggregate traffic coming from multiple incoming links



REPLICATION

Replicate traffic to multiple monitoring and security tools



FILTERING

Only send actionable data to each of the connected tools



LOAD BALANCING

Balance traffic over multiple monitoring and security tools

USE CASES

- Balance traffic over multiple monitoring and security tools: allows incoming traffic to be distributed evenly and dynamically across multiple output ports.
- Aggregate multiple traffic streams into higher speed links.
- Replicate traffic to multiple monitoring and security tools: outputs copies of incoming traffic to multiple output ports.
- Filter specific parts of the traffic based on a wide array of allow and drop rules to ensure the appropriate traffic is sent to the appropriate tools.

TECHNICAL SPECIFICATIONS

CONNECTORS

32 x QSFP-DD ports
2 x RJ45 out-of-band management
1 x RJ45 serial (RS232) console
1 x RJ45 ToD (time-of-day)
1 x USB 2.0

LEDs

1 x Health/system status
128 x QSFP-DD status
2 x MGMT link
2 x MGMT activity
2 x PSU status
6 x Fan status

ACCESSORIES

2 x 1300 W, 80+ Platinum, 100–240 VAC, 50–60 Hz
or
2 x 1300 W, -40V--60 VDC

WEIGHT

12.8 kg — 28.2 lb

COMPLIANCE

RoHS — CE — FCC

DIMENSIONS (WxDxH)

440 x 550 x 44 mm — 17.32 x 21.65 x 1.73 in

HIGHLIGHTS

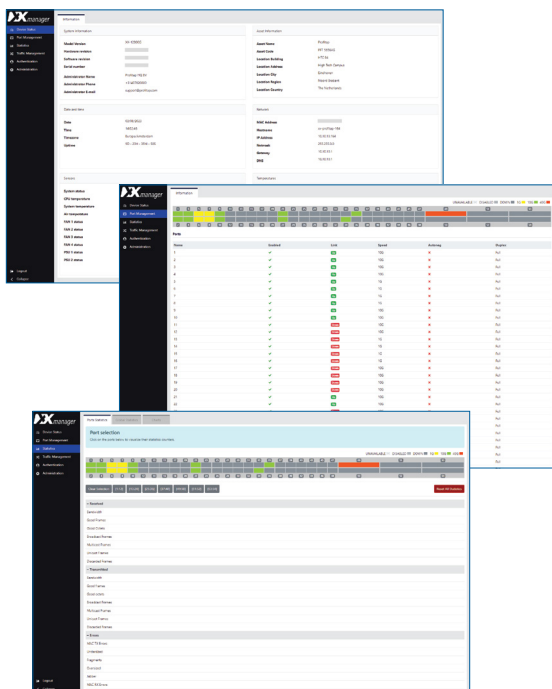
- Local and remote management (CLI, SSH, GUI, SNMP, Syslog)
- RESTful API support
- Layer 2-4 filtering
- Flexible role-based management access
- TACACS+ / RADIUS authentication
- Centralized authentication via Profitap Supervisor (local users, TACACS+, RADIUS)
- Redundant, hot-swappable, Platinum efficiency PSUs and fan modules
- High-density, 12.8 Tbps throughput in a 1U footprint
- Supports 40G, 100G, 4 x 100G, 2 x 200G, 400G
- Supports QSFP28 and QSFP-DD transceivers

ORDER REFERENCES

PORT LICENSE	AC (2 x 1300 W, 100-240 VAC) PSU	DC (2 x 1300 W, -40V--60 VDC) PSU
16 x 400GbE QSFP-DD	XX-12800G-16-AC	XX-12800G-16-DC
32 x 400GbE QSFP-DD	XX-12800G-32-AC	XX-12800G-32-DC



XX-Manager is a web-based interface integrated in every XX-12800G unit, allowing easy access to the configuration and monitoring of XX-12800G settings and behavior from any OS or platform.



DEVICE STATUS

Device status offers a quick overview of operational statistics related to the packet broker hardware.

PORT MANAGEMENT

Port management offers instant overview of port status and speed. Users control the configuration of all SFP modules, where each module offers additional information in the specific status section.

PORT STATISTICS

Port statistics displays and monitors the statistics counter for each of the device interfaces.