

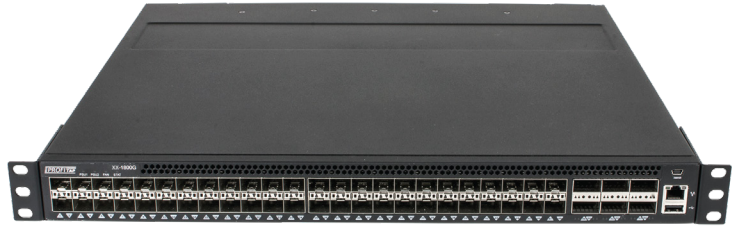
# XX-1800G

PROVIDES THE DATA THAT COUNTS FOR NETWORK MONITORING

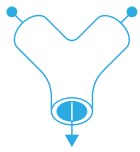
## AGGREGATION, REPLICATION, ADVANCED FILTERING, LOAD BALANCING

The Profitap XX-1800G is a high-density Network Packet Broker, bringing you the power and flexibility of network traffic management with a total throughput of 1800 Gbps in a single 19" rack unit.

The XX-1800G features 48 SFP28 (1/10/25 Gbps) and 6 QSFP28 ports (40/100 Gbps) providing aggregation, replication, filtering and load balancing in very high bandwidth port monitoring and analysis scenarios.

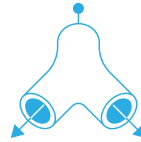


## KEY FEATURES



### AGGREGATION

Aggregate traffic coming from multiple incoming links



### REPLICATION

Replicate traffic to multiple monitoring and security tools



### FILTERING

Only send actionable data to each of the connected tools



### LOAD BALANCING

Balance traffic over multiple monitoring and security tools

## USE CASES

- Balance traffic over multiple monitoring and security tools: allows incoming traffic to be distributed evenly and dynamically across multiple output ports.
- Aggregate multiple traffic streams into higher speed links.
- Replicate traffic to multiple monitoring and security tools: outputs copies of incoming traffic to multiple output ports.
- Filter specific parts of the traffic based on a wide array of allow and drop rules to ensure the appropriate traffic is sent to the appropriate tools.

## TECHNICAL SPECIFICATIONS

### CONNECTORS

48 x SFP28 ports  
6 x QSFP28 ports  
1 x RJ45 (serial) out-of-band management  
1 x mini-USB console (RS232)

### LEDs

1 x Fan  
1 x System status  
1 x PSU1 status  
1 x PSU2 status

### ACCESSORIES

2 x 550 W, 80+ Platinum, 100-240 VAC, 50-60 Hz  
or  
2 x 800 W, -40V--60 VDC

### WEIGHT

8.7 kg — 19.18 lb

### COMPLIANCE

RoHS — CE — FCC

### DIMENSIONS (WxDxH)

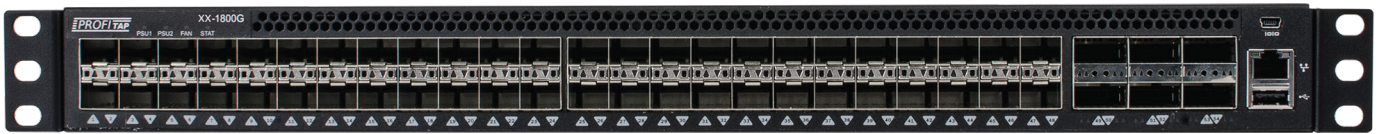
440 x 410 x 44 mm — 17.32 x 16.14 x 1.73 in

# HIGHLIGHTS

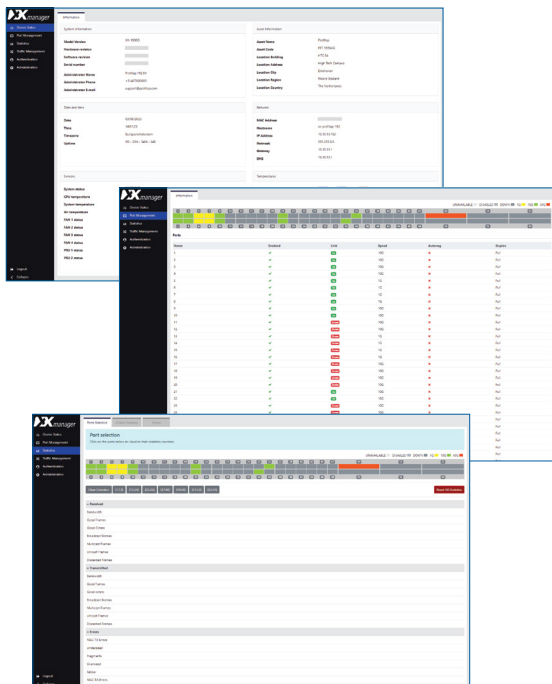
- Local and remote management (CLI, SSH, GUI, SNMP, Syslog)
- RESTful API support
- Layer 2-4 filtering
- Flexible role-based management access
- TACACS+ authentication
- Centralized authentication via Profitap Supervisor (local users, TACACS+, RADIUS)
- Redundant, hot-swappable, Platinum efficiency PSUs and fan modules
- High-density, 1800 Gbps throughput in a 1U footprint
- Supports 1G, 10G, 25G, 40G, 100G
- Supports 4 x 10G and 4 x 25G splits on QSFP28 ports via fanout cables

# ORDER REFERENCES

<b>PORT LICENSE</b>	<b>AC (2 x 550 W, 100-240 VAC) PSU</b>	<b>DC (2 x 800 W, -40V--60 VDC) PSU</b>
24 x 25GbE + 2 x 100GbE	XX-1800G-242-AC	XX-1800G-242-DC
48 x 25GbE + 6 x 100GbE	XX-1800G-486-AC	XX-1800G-486-DC



XX-Manager is a web-based interface integrated in every XX-1800G unit, allowing easy access to the configuration and monitoring of XX-1800G settings and behavior from any OS or platform.



## DEVICE STATUS

Device status offers a quick overview of operational statistics related to the packet broker hardware. Measured temperatures are recorded with a history of 72 hours, to allow filtering back in time on temperature statistics.

## PORT MANAGEMENT

Port management offers instant overview of port status and speed. Users control the configuration of all QSFP modules, where each module offers additional information in the specific status section.

## PORT STATISTICS

Port statistics displays and monitors the statistics counter for each of the device interfaces. Users can view or export this information for a later analysis. It is also possible to easily compare the traffic bandwidth on each port.