

# XX-3200G

PROVIDES THE DATA THAT COUNTS FOR NETWORK MONITORING

## AGGREGATION, REPLICATION, ADVANCED FILTERING, LOAD BALANCING

The Profitap XX-3200G is a high-density Network Packet Broker, bringing you the power and flexibility of network traffic management with a total throughput of 3200 Gbps in a single 19" rack unit.

The XX-3200G features 32 QSFP28 ports (40/100 Gbps) providing aggregation, replication, filtering and load balancing in very high bandwidth port monitoring and analysis scenarios.

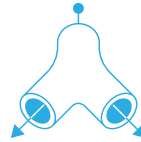


## KEY FEATURES



### AGGREGATION

Aggregate traffic coming from multiple incoming links



### REPLICATION

Replicate traffic to multiple monitoring and security tools



### FILTERING

Only send actionable data to each of the connected tools



### LOAD BALANCING

Balance traffic over multiple monitoring and security tools

## USE CASES

- Balance traffic over multiple monitoring and security tools: allows incoming traffic to be distributed evenly and dynamically across multiple output ports.
- Aggregate multiple traffic streams into higher speed links.
- Replicate traffic to multiple monitoring and security tools: outputs copies of incoming traffic to multiple output ports.
- Filter specific parts of the traffic based on a wide array of allow and drop rules to ensure the appropriate traffic is sent to the appropriate tools.

## TECHNICAL SPECIFICATIONS

### CONNECTORS

32 x QSFP28 ports  
2 x RJ45 out-of-band management  
1 x USB

### LEDs

1 x Fan  
1 x System status  
1 x PSU1 status  
1 x PSU2 status

### ACCESSORIES

2 x 550 W, 80+ Platinum, 100–240 VAC, 50–60 Hz  
or  
2 x 800 W, -40V--60 VDC

### WEIGHT

8.7 kg — 19.18 lb

### COMPLIANCE

RoHS — CE — FCC

### DIMENSIONS (WxDxH)

440 x 410 x 44 mm — 17.32 x 16.14 x 1.73 in

# HIGHLIGHTS

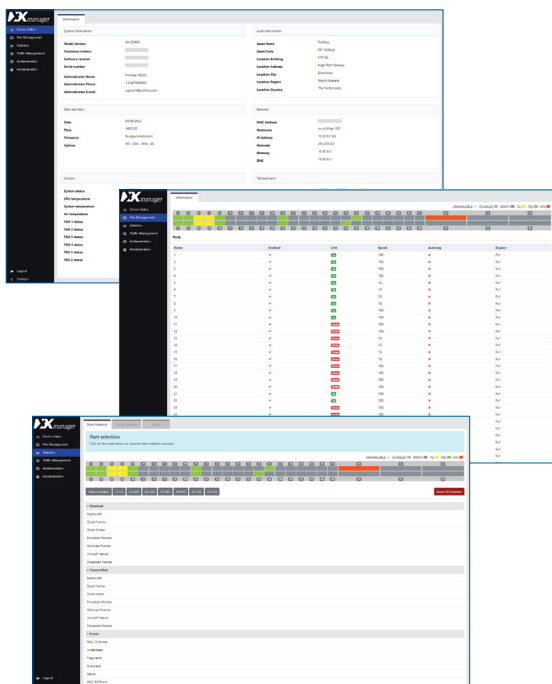
- Local and remote management (CLI, SSH, GUI, SNMP, Syslog)
- RESTful API support
- Layer 2-4 filtering
- Flexible role-based management access
- TACACS+ authentication
- Centralized authentication via Profitap Supervisor (local users, TACACS+, RADIUS)
- Redundant, hot-swappable, Platinum efficiency PSUs and fan modules
- High-density, 3200 Gbps throughput in a 1U footprint
- Supports 40G, 100G
- Up to 128 x 10/25G SFP28 logical ports via fanout cables

# ORDER REFERENCES

<b>PORT LICENSE</b>	<b>AC (2 x 550 W, 100-240 VAC) PSU</b>	<b>DC (2 x 800 W, -40V--60 VDC) PSU</b>
16 x 100GbE QSFP28	XX-3200G-16-AC	XX-3200G-16-DC
32 x 100GbE QSFP28	XX-3200G-32-AC	XX-3200G-32-DC



XX-Manager is a web-based interface integrated in every XX-3200G unit, allowing easy access to the configuration and monitoring of XX-3200G settings and behavior from any OS or platform.



## DEVICE STATUS

Device status offers a quick overview of operational statistics related to the packet broker hardware.

## PORT MANAGEMENT

Port management offers instant overview of port status and speed. Users control the configuration of all SFP modules, where each module offers additional information in the specific status section.

## PORT STATISTICS

Port statistics displays and monitors the statistics counter for each of the device interfaces.